





# CLASS PROJECTS

**STADTLANDER WOODCARVINGS**  
 EMAIL: BOBSTADTLANDER@ROADRUNNER.COM  
 WEBSITE: WWW.STADTLANDERCARVINGS.COM  
 PHONE: 330-931-7847

### Color Code Key

(All reliefs projects contain pattern and finished piece photos as a minimum)

-  Green: Includes step-by-step carving photos.
-  Yellow: Includes step-by-step painting photos.
-  Blue: Includes step-by-step written carving instructions
-  Red: Includes step-by-step written painting instructions

## TABLE OF CONTENTS

2 OR 3 DAY RELIEFS	
SCENIC.....	1-3
HUMAN/ANIMAL.....	4
EGGS AND ORNAMENTS .....	5-7
MISCELLANEOUS ONE DAY PROJECTS...7	
4 OR 5 DAY RELIEFS	
SCENIC.....	8-10
HUMAN/ANIMAL .....	10
ANIMAL.....	11
2 OR 3 DAY IN-THE-ROUND .....	12
4 OR 5 DAY IN-THE-ROUND.....	13



**SUNFLOWER 1**  
PLAIN OR COLORED

**2 OR 3 DAY RELIEF PROJECTS –SCENIC**  
 ALL PROJECTS ARE 11" X 12" X 1" THICK EXCEPT WHERE NOTED.  
 Additional items provided are noted by the color coded symbols.



**BARN 1**  
PLAIN OR COLORED



**BARN 7**  
PLAIN OR COLORED



**BARN 4**  
PLAIN (SHOWN ON 14" OVAL PLATE) OR COLORED

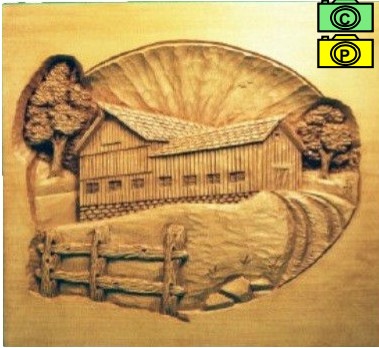


**BARN 6**  
PLAIN OR COLORED



## 2 OR 3 DAY RELIEF PROJECTS—SCENIC

ALL PROJECTS ARE 11" X 12" X 1" THICK EXCEPT WHERE NOTED. Additional items provided are noted by the color coded symbols. See page 1 for key.



**BARN 5**  
PLAIN OR COLORED



**MILL 1, JEWEL MILL**



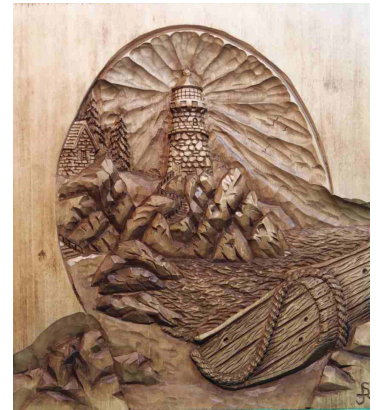
**OLD TRUCK 6**  
11 X 12 X 1



**MILL 3**  
PLAIN OR COLORED (SHOWN ON 14" OVAL PLATE)



**WINDMILL 1**



**LIGHTHOUSE 4**



**LIGHTHOUSE 7**  
8-1/2 X 10 OVAL



**LIGHTHOUSE 8**  
9 X 13 OVAL



**LIGHTHOUSE 9 (CLOCK)**  
12" PLAIN EDGE FLAT PLATE

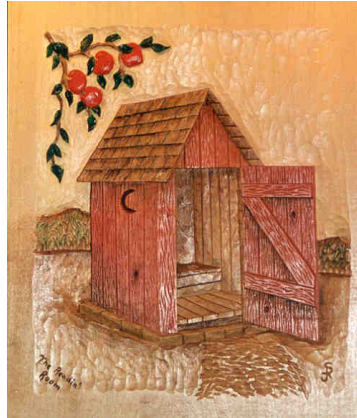


## 2 OR 3 DAY RELIEF PROJECTS - SCENIC

ALL PROJECTS ARE 11" X 12" X 1" THICK EXCEPT WHERE NOTED. Additional items provided are noted by the color coded symbols. See page 1 for key.



**WISHING WELL**  
8-1/2" X 10" OVAL



**OUTHOUSE 1**



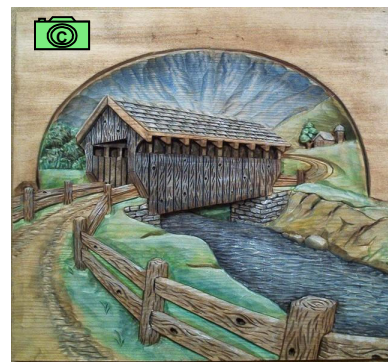
**OUTHOUSE 2 (CLOCK)**  
14" RIM PLATE



**COVERED BRIDGE 1**



**COVERED BRIDGE 3**



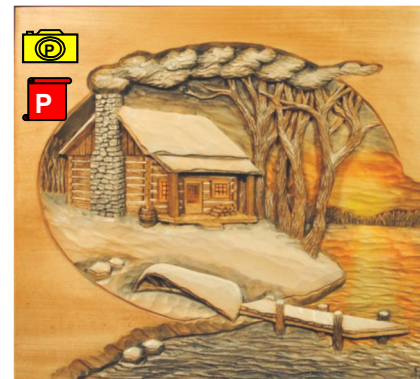
**COVERED BRIDGE 4**



**CABIN 1**



**CABIN 2**



**CABIN 3**

## 2 OR 3 DAY RELIEF PROJECTS— HUMAN AND ANIMALS

Additional items provided are noted by the color coded symbols. See page 1 for key.



**PIRATE 4 (SMALL)**  
8-1/2 X 11 X 2" THICK  
ROUGHOUT AVAILABLE



**COWGIRL**  
8-1/2 X 11 X 2" THICK  
ROUGHOUT AVAILABLE



**TIME TO DINE**  
9 X 12 X 2" THICK  
(AN EXTRA DAY IS NEEDED  
TO BURN)  
ROUGHOUT AVAILABLE



**WOLF AND MOON**  
4" DIA X 3/4 THICK  
ROUGHOUT AVAILABLE



**BLUE HERON**  
11" X 12" X 1"



## 2 OR 3 DAY RELIEF PROJECTS - EGGS and ORNAMENTS

Additional items provided are noted by the color coded symbols. See page 1 for key.

**Note:** For the Egg projects, many variations can be done for all types and sizes. Small eggs are 3-1/2" tall, medium eggs are 4-1/2" tall, large eggs are 5" tall, and Dino eggs are 7-1/2" tall. Most students should be able to complete two small eggs in a two or three day class.

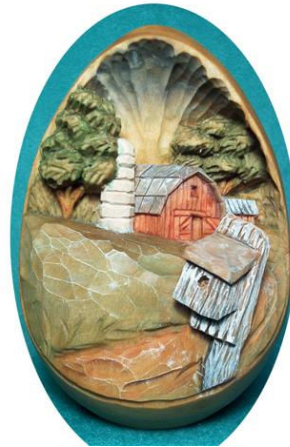
### COVERED BRIDGES



**COVERED BRIDGE 1 EGG**  
PAINTED OR NATURAL  
SMALL

**COVERED BRIDGE 2 EGG**  
MEDIUM

### BARNES



**BARN 2 EGG**  
SMALL

**BARN 11 EGG**  
SMALL

**BARN 12 EGG**  
SMALL

**BARN 7 EGG**  
LARGE

**BARN 1 EGG**  
LARGE

### MILLS



**MILL 1 EGG**  
SMALL

**MILL 2 EGG**  
MEDIUM

**MILL 2 BELL**  
5" TALL X 1-1/2" THICK



## 2 OE 3 DAY RELIEF PROJECTS - EGGS and ORNAMENTS

Additional items provided are noted by the color coded symbols. See page 1 for key.

**Note:** For the Egg projects, many variations can be done for all types and sizes. Small eggs are 3-1/2" tall, medium eggs are 4-1/2" tall, large eggs are 5" tall, and Dino eggs are 7-1/2" tall. Most students should be able to complete two small eggs in a two or three day class.

### CABINS



**CABIN 2 EGG**  
SMALL



**CABIN 6 EGG**  
MEDIUM



**CABIN 8 EGG**  
LARGE



**CABIN 9 EGG**  
LARGE

### CABINS WITH STREAMS



**CABIN 3 EGG**  
SMALL



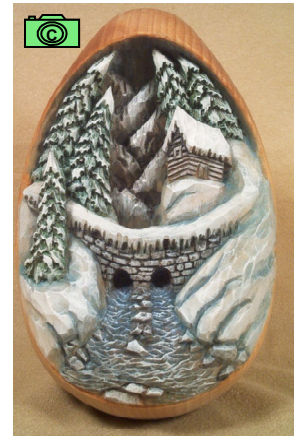
**CABIN 8 EGG**  
SMALL



**CABIN 1 EGG**  
LARGE



**CABIN 5 EGG**  
LARGE



**CABIN 7 EGG**  
DINO

### LIGHTHOUSES



**LIGHTHOUSE 1 EGG**  
NATURAL OR PAINTED  
SMALL



**LIGHTHOUSE 4 EGG**  
SMALL



**LIGHTHOUSE 2 EGG**  
MEDIUM



**LIGHTHOUSE 3 EGG**  
LARGE



## 2 OR 3 DAY RELIEF PROJECTS - EGGS and ORNAMENTS

Additional items provided are noted by the color coded symbols. See page 1 for key.

**Note:** For the Egg projects, many variations can be done for all types and sizes. Small eggs are 3-1/2" tall, medium eggs are 4-1/2" tall, large eggs are 5" tall, and Dino eggs are 7-1/2" tall. Most students should be able to complete two small eggs in a two or three day class.

### EGGS



**RABBIT 1 EGG**  
SMALL



**RABBIT 3 EGG**  
MEDIUM



**RABBIT 2 EGG**  
MEDIUM



**SANTA EGG**  
Quartered Turkey Egg

### MISCELLANEOUS ONE DAY PROJECTS

Many of these can be done in less than one day. Additional items provided are noted by the color coded symbols. See page 1 for key.

### RELIEF



**YELLOW LAB**  
4-1/2" x 4-1/2" x 1/2"



**HOUND DOG**  
4" x 3-1/4" x 1/2"



**BEAGLE WITH SANTA CAP**  
4-1/2" x 4-1/2" x 1/2"



**HOLIDAY BELLS ORNAMENT**  
5 X 5 X 1/2"

### WOODBURNING



**ORNAMENTS**  
4" DIAMETER



**CHRISTMAS TREE**  
6" TALL

### IN-THE-ROUND



**COWBOY BOOT**  
2-1/2" TALL



**BOOT BOTTLESTOPPER**  
5-1/4" TALL



**MOCCASSIN**  
4" LONG



## 4 OR 5 DAY RELIEF PROJECTS - SCENIC

Additional items provided are noted by the color coded symbols. See page 1 for key.



**BARN 2, DRYDEN, NY**  
14 X 14 X 1



**BARN 8, INDIANA**  
14 X 14 X 1



**BARN 10, TUSCARAWAS CO., OH,**  
14 X 14 X 1



**MILL 2, JEWEL MILL,**  
14 X 14 X 1  
ROUGHOUT AVAILABLE



**OLD TRUCK 2**  
14 X 14 X 1



**RR STATION 1, NEWARK VALLEY**  
11 x 18 x 1 OVAL or  
RR STATION 2, 11 X 14 X 1



**MILL 5 (OVERSHOT)**  
14 X 14 X 1  
ROUGHOUT AVAILABLE



**MILL 7 SMETHPORT, PA**  
14 X 14 X 1  
ROUGHOUT AVAILABLE



**WINDMILL 2**  
12 X 15 OVAL



**WINDMILL 3**  
(ON LARGE BOOK BOX,  
11" TALL X 13-1/2")



### 4 OR 5 DAY RELIEF PROJECTS—SCENIC

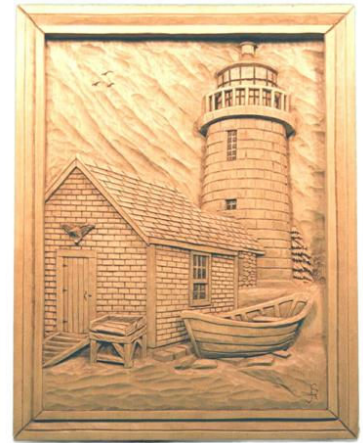
Additional items provided are noted by the color coded symbols. See page 1 for key.



**LIGHTHOUSE 1**  
14 X 14 X 1



**LIGHTHOUSE 2**, 14 X 18 X 1 OVAL  
ROUGHOUT AVAILABLE



**LIGHTHOUSE 3, MONHEGAN**  
11 X 14 X 1  
ROUGHOUT AVAILABLE



**MENHADEN STEAMER**  
14 X 18 X 1 OVAL,  
ROUGHOUT AVAILABLE



**MYSTIC SEAPORT**  
14 X 18 X 1 OVAL



**LIGHTHOUSE 5**, 14 X 18 X 1 OVAL  
ROUGHOUT AVAILABLE



**COVERED BRIDGE 2**, 14 X 14 X 1



**ALMA'S CELLAR**, 14 X 14 X 1  
ROUGHOUT AVAILABLE



**MILL 9, GLADE CREEK MILL**  
12 X 16, ADVANCED



**4 OR 5 DAY RELIEF PROJECTS—HUMAN**  
 Additional items provided are noted by the color coded symbols. See page 1 for key.



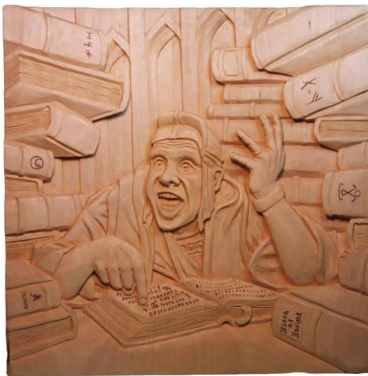
**Christ Head Relief**  
 8 x 10 x 4  
 ROUGHOUT AVAILABLE



**Mountain Man**  
 17X12X2  
 ROUGHOUT AVAILABLE



**Bark Carvings**  
 Vary In Size



**FLASH OF INSIGHT**  
 14 X 14 X 1  
 ROUGHOUT AVAILABLE



**NATIVE AMERICAN MASK 1**  
 14 X 10 X 4  
 ROUGHOUT AVAILABLE



**NATIVE AMERICAN WOMAN 1**  
 14 X 18 X 1 OVAL  
 ROUGHOUT AVAILABLE



**NATIVE AMERICAN MAN 1**  
 14 X 18 X 1 OVAL  
 ROUGHOUT AVAILABLE



**BEST FRIENDS**  
 17X12X2  
 ROUGHOUT AVAILABLE



**AMISH MAN AND BARN**  
 17X12X2  
 ROUGHOUT AVAILABLE



**GOLFER 1**  
 NINE IRON NIGEL  
 10X14X2  
 ROUGHOUT AVAILABLE



**PIRATE 1 (LARGE)**  
 12X16X2  
 ROUGHOUT AVAILABLE

## 4 OR 5 DAY RELIEF PROJECTS—ANIMALS

Additional items provided are noted by the color coded symbols. See page 1 for key.



**YELLOW LAB or BLACK LAB**  
14 X 14 X 1



**GOLDEN RETRIEVER**  
14 X 14 X 1



**WOLF RELIEF**  
14 X 18 X 1 OVAL  
ROUGHOUT AVAILABLE



**MOOSE**  
12 X 15 X 1 OVAL



## 2 OR 3 DAY PROJECTS: IN-THE-ROUND

All in-the round projects contain finished piece photos. Additional items provided are noted by the color coded symbols. See page 1 for key.



**COWGIRL  
BOTTLESTOPPER**  
5" TALL  
ROUGHOUT AVAILABLE



**CARICATURE MOOSE,  
REGULAR OR HOLIDAY**  
7- 8" TALL



**TWISTED GOLFER**  
9" TALL  
ROUGHOUT AVAILABLE



**PIRATE 3**  
7" TALL  
ROUGHOUT AVAILABLE



**ROLLING PINS - VARIOUS DESIGNS**  
5 to 7" Long



**PIRATE EGG**  
Ostrich Egg



**PUMPKINS**  
1-1/2" x 1-1/2" or 2" x 2" Blocks

## VARIOUS CARICATURES, 1-1/2" X 1-1/2"



## 4 OR 5 DAY PROJECTS: IN-THE-ROUND

All in-the round projects contain finished piece photos. Additional items provided are noted by the color coded symbols. See page 1 for key.



**COWBOY WITH LASSO**  
11" TALL X 4" X 3"  
ROUGHOUT AVAILABLE



**PIRATE 2**  
8" TALL X 6" WIDE X 4"  
ROUGHOUT AVAILABLE



**TREASURE HUNTER**  
12" tall x 9" wide x 4"  
ROUGHOUT AVAILABLE



**UNION SOLDIER DRUMMER**  
9" TALL X 5" WIDE X 4"  
ROUGHOUT AVAILABLE



**WOLF 2**  
7" TALL X 6" WIDE X 4"  
ROUGHOUT AVAILABLE